

Data Surge Protector, Indoor, 10 Gigabit Ethernet



TSJ-10GBEPOE-TT

Data Surge Protector, Indoor, 10 Gigabit Ethernet/Power over Ethernet++

Features

- 10 Gigabit Ethernet compatible
- Hybrid SASD, GDT protection technology
- Shielded RJ-45 connectivity
- DIN-Rail mounting clip
- Integral ground wire, lug

Applications

- 10 Gigabit Ethernet / PoE++ Networks
- Telecommunications Base Stations
- IT & Data Centers
- Security Cameras
- Wireless Access Points
- Point-to-Point Links

Description

Data surge protector (also known as SPD or lightning protector) TSJ-10GBEPOE-TT from Transtector, is an Indoor style SPD that utilizes state of the art hybrid SASD, GDT technology to protect equipment in 10 Gigabit Ethernet PoE++ networks, while remaining transparent to data throughput. Transtector data surge protectors are available in stock with same day shipping.

Electrical Specifications

Description	Minimum	Typical	Maximum	Units
Connectors		Shielded RJ45		
Compatible Cables		Cat 6/6A STP, Cat 7 STP		
Data Protocols		10 Gigabit Ethernet PoE++		
Data Rate			10,000	Mb/s
Characteristic Impedance			100	Ohms
Series Impedance (Data)			1	Ohms
Capacitance (Differential)			30	pF
Capacitance (Common)			5	pF
Power over Ethernet Protocols		PoE++		
Vdc Rating (Data)		48	60	Vdc
PoE Power			100	W
PoE Current Per Pin			1.5	A

Surge Protection Specification

Description	Minimum	Typical	Maximum	Units
-------------	---------	---------	---------	-------

Click the following link (or enter part number in "SEARCH" on website) to obtain additional part information including price, inventory and certifications:
[Data Surge Protector, Indoor, 10 Gigabit Ethernet TSJ-10GBEPOE-TT](#)

Data Surge Protector, Indoor, 10 Gigabit Ethernet



TSJ-10GBEPOE-TT

Data Surge Protector, Indoor, 10 Gigabit Ethernet/Power over Ethernet++

Surge Protection Technology	SASD, GDT
Protected Pins	[1,2], [3,6], [4,5], [7,8]
Protection Modes	L-G, L-L
Response Time	5 ns

Mechanical Specifications

Size

Height	1 in	[25.4 mm]
Width	2.5 in	[63.5 mm]
Depth	2 in	[50.8 mm]
Weight	0.3 lbs	[136.08 g]
Housing Material and Plating	Powder Coated Aluminum	

Environmental Specifications

Operating Temperature	-40 to +75 deg C
Storage Temperature	-40 to +75 deg C

Mount Type	Din-Rail, Inline
Grounding	Internal Ground Wire, Lug

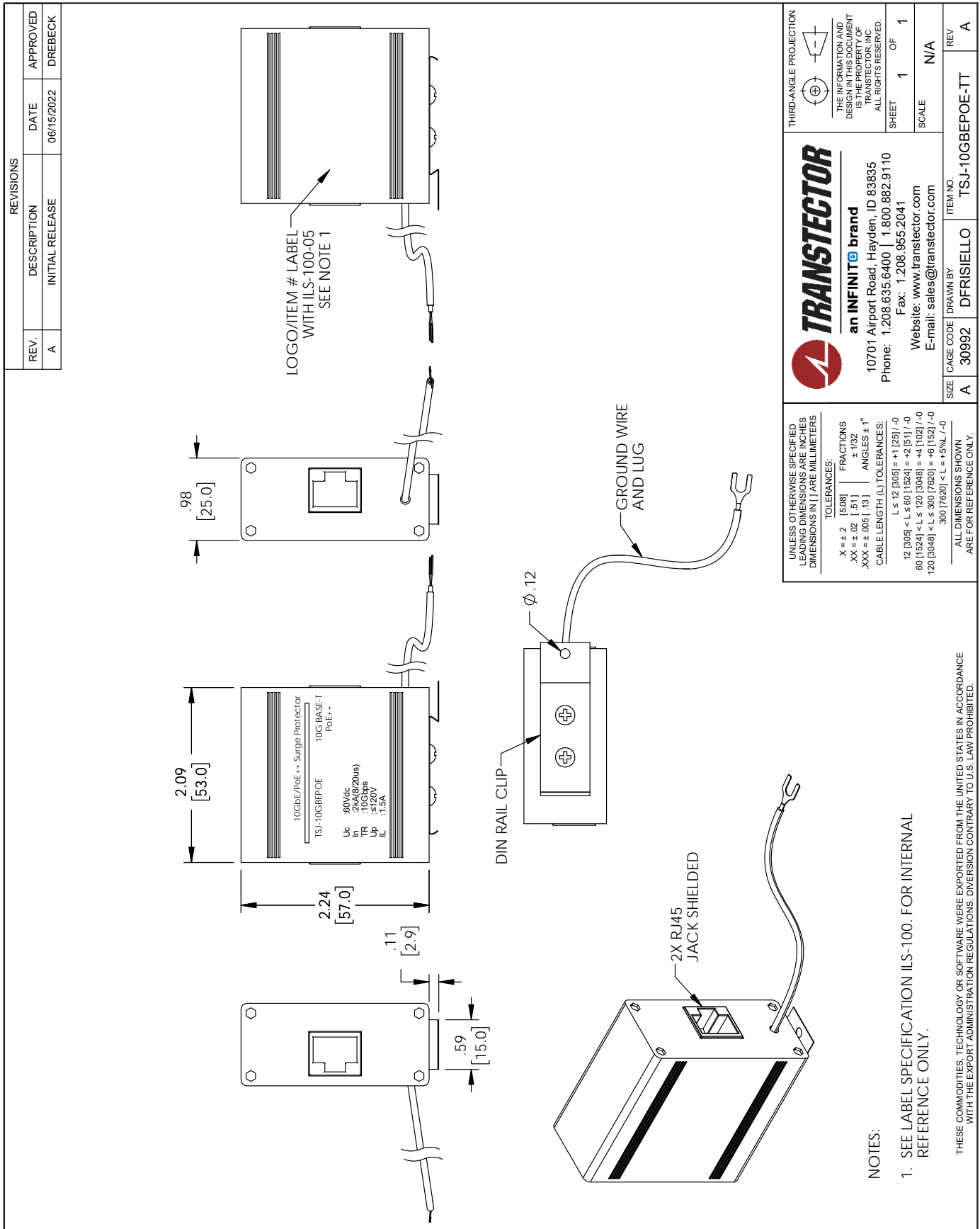
Transtector Systems specializes in protection of highly sensitive, low voltage equipment through its patented, non-degrading silicon diode technology and custom filters. Our power quality expertise translates into a diverse product offering including AC, DC, and signal applications as well as integrated cabinets, power distribution panels and EMP hardened devices.

Click the following link (or enter part number in "SEARCH" on website) to obtain additional part information including price, inventory and certifications: [Data Surge Protector, Indoor, 10 Gigabit Ethernet TSJ-10GBEPOE-TT](#)

URL: <https://www.transtector.com/TSJ-10GBEPOE-TT-p.aspx>

The information contained in this document is accurate to the best of our knowledge and representative of the part described herein. It may be necessary to make modifications to the part and/or the documentation of the part, in order to implement improvements. Transtector reserves the right to make such changes as required. Unless otherwise stated, all specifications are nominal. Transtector does not make any representation or warranty regarding the suitability of the part described herein for any particular purpose, and Transtector does not assume any liability arising out of the use of any part or documentation.

TSJ-10GBEPOE-TT CAD Drawing



REVISIONS			
REV.	DESCRIPTION	DATE	APPROVED
A	INITIAL RELEASE	06/15/2022	DREBECK

TRANSTECTOR
an INFINIT® brand

10701 Airport Road, Hayden, ID 83835
Phone: 1.208.635.6400 | 1.800.882.9110
Fax: 1.208.955.2041
Website: www.transtector.com
E-mail: sales@transtector.com

THIRD-ANGLE PROJECTION

THE INFORMATION AND DESIGN IN THIS DOCUMENT IS THE PROPERTY OF TRANSTECTOR, INC. ALL RIGHTS RESERVED.

SHEET 1 OF 1
SCALE N/A

SIZE	CAGE CODE	DRAWN BY	ITEM NO.
A	30992	DFRISIELLO	TSJ-10GBEPOE-TT

REV A

UNLESS OTHERWISE SPECIFIED LEADING DIMENSIONS ARE INCHES DIMENSIONS IN [] ARE MILLIMETERS

TOLERANCES:

X ± .2	[5.08]	FRACTIONS
.XX ± .02	[.51]	± 1/32
.XXX ± .005	[.13]	ANGLES ± 1°

CABLE LENGTH (L) TOLERANCES:

L ≤ 12 [305]	± 1/25 (-/0)
12 [305] < L ≤ 60 [1524]	± 2 [51] (-/0)
60 [1524] < L ≤ 120 [3048]	± 4 [102] (-/0)
120 [3048] < L ≤ 300 [7620]	± 6 [152] (-/0)
300 [7620] < L ≤ 999 [25476]	± 9 [229] (-/0)

ALL DIMENSIONS SHOWN ARE FOR REFERENCE ONLY.

NOTES:

- SEE LABEL SPECIFICATION ILS-100. FOR INTERNAL REFERENCE ONLY.

THESE COMMODITIES, TECHNOLOGY OR SOFTWARE WERE EXPORTED FROM THE UNITED STATES IN ACCORDANCE WITH THE EXPORT ADMINISTRATION REGULATIONS. DIVERSION CONTRARY TO U.S. LAW PROHIBITED.